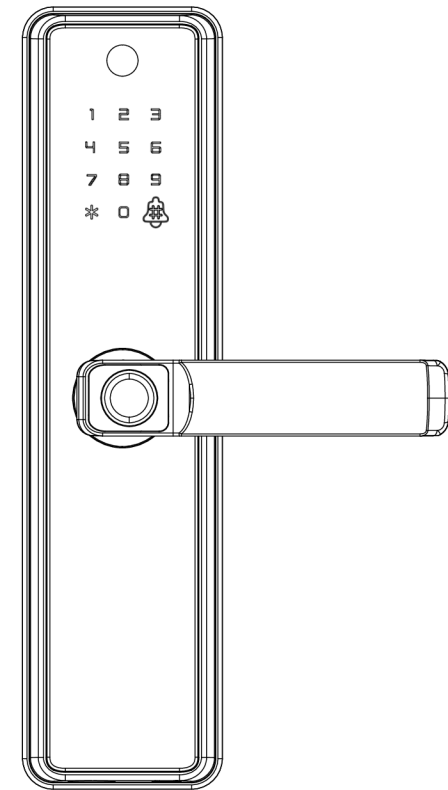


# Smart Lock

## User manual



IC card



Password



Mechanical key



APP



Fingerprint

**8 Language voice, Free to switch**



\* To connect to the Internet, must purchase the version with Tuya WiFi function

Scan the QR code below to download the APP






Search on the mobile app market or the Apple Store  
"Tuya Smart" or "Smart Life"  
Virsi 1.2-Edisi 2022.10.16

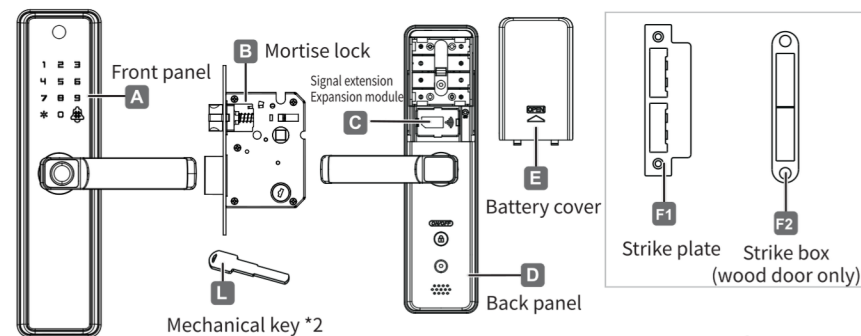
## ⚠ ATTENTION:





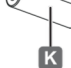
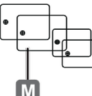
The lock comes with “English” voice as standard, and you can switch to other language by the following operations

⚠ keep the lock under factory default without any users registered  
Activate the keypad and input the code for other language of the voice

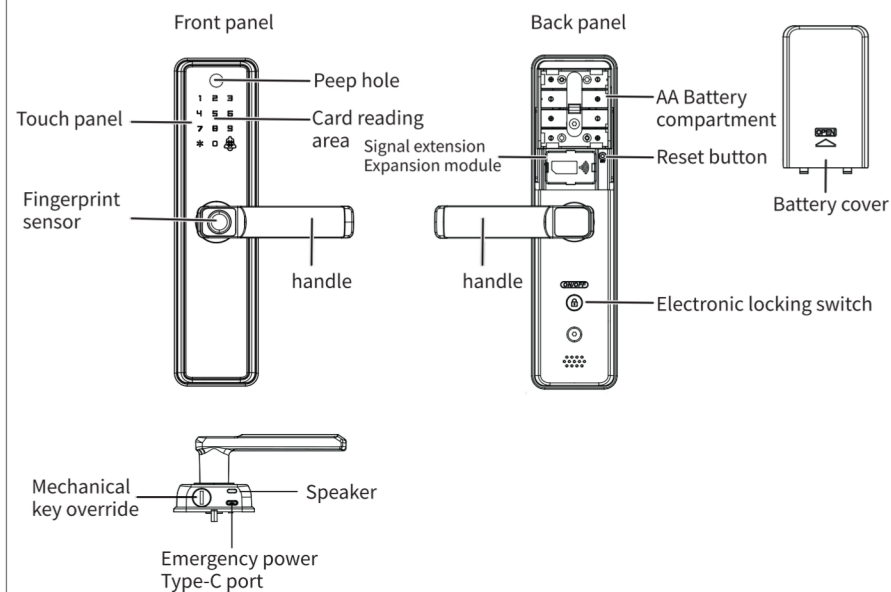
EN	333666991#-English
	333666992#-Arabic
	333666993#-Russian
	333666994#-Portuguese
	333666995#-Thai
	333666996#-Spanish
	333666997#-Vietnamese
	333666998#-Indonesian

## Accessories



Door thickness Quantity	 G Connecting square bar	 H Connecting stud	 I Connecting screw	 J Screw	 K AA battery x 4	 M IC Card x 2
35-39mm	8*8*80mm	4*5*35mm x 2	M4*30mm x 2	4.2*25mm X 4		
40-50mm	8*8*80mm	4*5*35mm x 2	M4*45mm x 2	4.2*25mm X 4		
51-60mm	8*8*90mm	4*5*45mm x 2	M4*45mm x 2	4.2*25mm X 4		

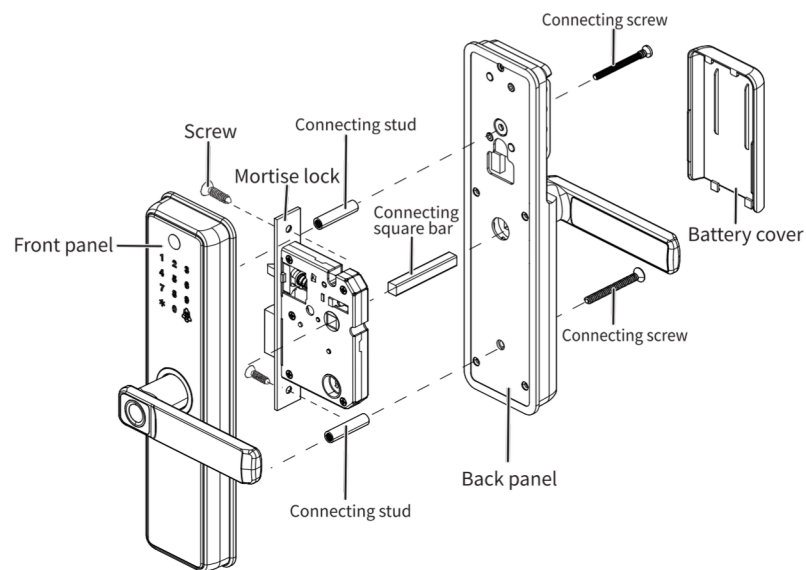
## Product overview



## Specification

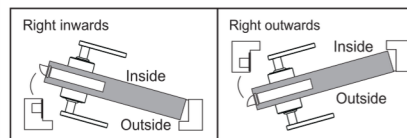
Material	Aluminum alloy, ABS, acrylic
Color	Black/gray gold
Door thickness	35-60mm
Correspondence	WIFI
Support system	iOS 7.0 or above, Android 4.4 or above
Battery life	(10-12 months) Press 10 times/day to unlock normally
Power support	DC6V: 4 AA alkaline batteries
Static current	$\leq 50$ uA
Dynamic current	<200mA
Unlocking mode	Fingerprint, IC card, password, APP, mechanical key
Unlocking time	1~1.5 S
Working temperature	-20~50°C
Working humidity	10%~95%
Factory default password	Factory default password :123456. This password is invalid after you reset the administrator.
Lock type	Support single bolt, 5072/4585/6085/050/5572 / KS insert tenon
Virtual password	Available
Number of users	IC card + password + fingerprint :250 groups, 9 groups of administrators

## Installation guide

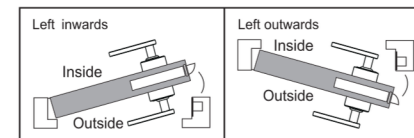


## Door opening direction selection

### 1. Right handle opening

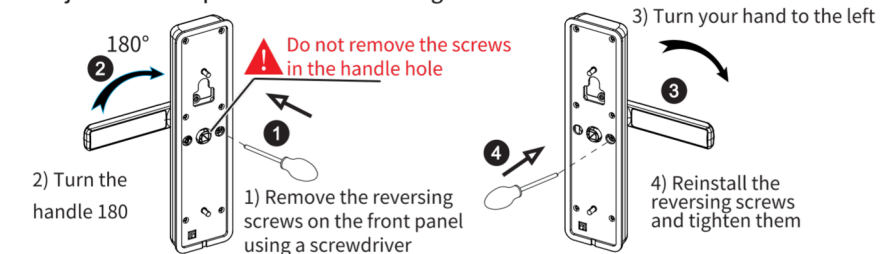


### 2. Left handle opening

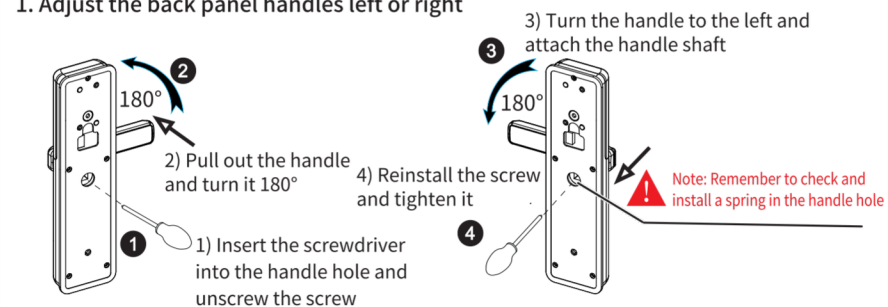


## Adjust Right Handle and Left Handle

### 1. Adjust the front panel handles left or right

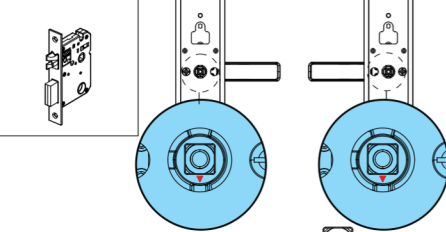


### 1. Adjust the back panel handles left or right



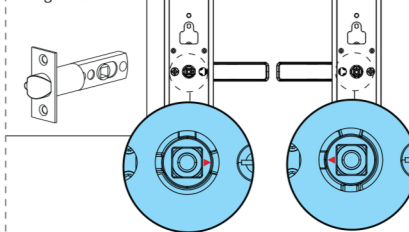
## Notes for mortise lock

### Double deadbolt



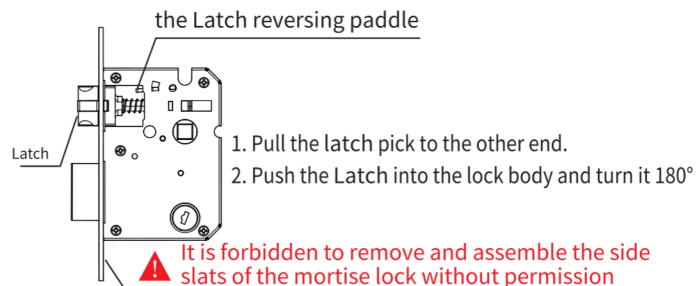
When double deadbolt is used, the arrow of the handle hole on the front panel always towards down

### Single deadbolt



When Single deadbolt is used, The arrows on the handle holes on the front panel are in the same direction as the handles.

## Double deadbolt mortise lock internal and external conversion



## Information and Safety Warnings:

### 1. introduce

This user manual will introduce the functions and usage of this smart lock. It is important that you follow the instructions and note all comments that appear in this manual.

Please refer to this manual before attempting to use this lock. If you have any questions not answered in this manual or require unconventional service, please call our customer service line or send us a FAQ.

### 2. Safety warning:

⚠ When reading this manual, pay attention to the following notes . notes must be read and followe it to prevent injury or damage to the lock.

⚠ Common usage:

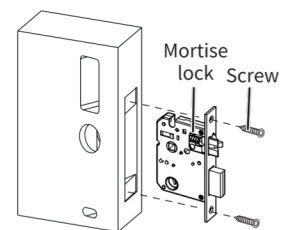
- \* This lock can only be used in the manner described in this manual.
- \* All parts of the inspection lock are included. If any parts are missing, please contact our service staff.
- \* There is a protective film on the front touch screen. If there is a scratch on the protective film, please remove the protective film when necessary.
- \* Please use 4 AA batteries. Do not mix old and new batteries or other zinc-manganese batteries. As described in this manual, do not leave batteries outside items are inserted into the lock.
- \* Before starting installation, please ensure that all surfaces are flat, mounted on the door or have any type of defects such as gaps or warping, The lock may fail or become completely inoperable.
- \* Do not apply any detergent directly to any part of the lock. When cleaning, only use clean water or mild cleaner in soft non - grind clean on the cloth.
- \* Locks must be used with theTuya APP. The lock works without an APP, but only when using an app can realize the complete function.

### 3. Terms of Sale and Service

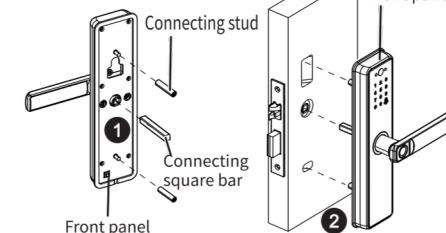
- \* Please read the instructions carefully before use!
- \* 1 year electronic warranty.
- \* This product comes with a 1-year limited warranty on electronic parts. Limited warranty on mechanical and surface quality against defects in materials and workmanship under normal use. Proof of purchase and ownership is required for the warranty to take effect.
- \* Please feel free to contact us for any errors or problems in our manual or after sale terms. .
- \* We are not responsible for compensation or free maintenance for damage caused by human factors or unavoidable causes. Please check our after-sales service terms.
- \* Non-technical personnel do not remove the lock at will. If necessary, please operate under the guidance of technical personnel.
- \* Note: The product picture may be slightly different from the actual product, please refer to the actual product.
- \* After replacing the battery, please do not discard it at will. Please return the battery to the recycling station to avoid environmental pollution!

## Installation steps

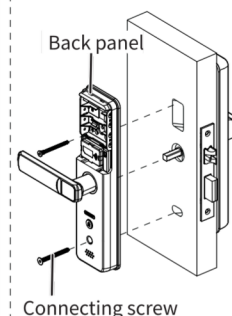
### 1. Install mortise lock



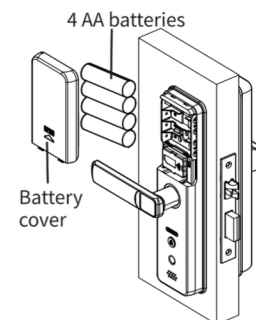
### 2. Install the front panel



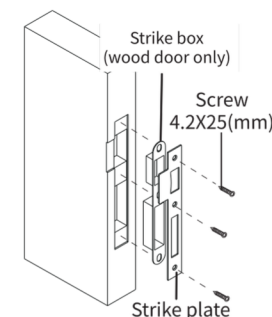
### 3. Install the back panel



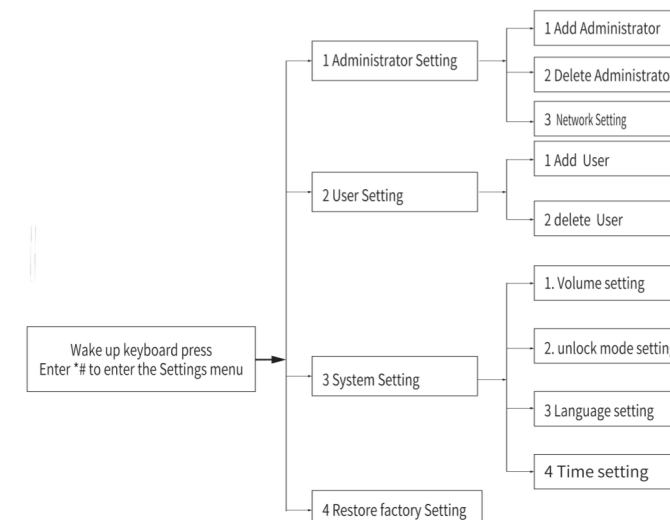
### 4. Install batteries



### 5. Install Strike plate&Strike box



## The menu structure is shown in the figure





## Precautions before operating the smart lock

### 1. Electronic switch button setting

By default: The default administrator password is 123456. You must change this password in order to set the network. You cannot set the smart lock through Tuya APP under the default password 123456 in the factory state, and the electronic lock button is also unlocked!



Only the administrator has permission to open the lock:  
Press once, voice broadcast:  
The door was locked



Both administrators and common users can open the lock:  
Press it again to hear the voice broadcast:  
The lock is off

**Note:** Press the electronic lock switch once to unlock, and press the lock again to close.

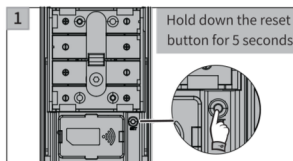
### 2. Other precautions

- 1) The administrator can be a password/fingerprint or IC card, which you can set according to your own requirements. There are 9 administrators in total.
- 2) Press the "🔒" key to confirm and press \* to return to the previous step. If there is no operation within 10 seconds, the lock will exit the setting.
- 3) After 5 incorrect unlock, the keyboard will be locked for 30 seconds, during which time no operation will respond.
- 4) If you enter the wrong password for more than 5 consecutive times, the keyboard will be locked for 30 seconds. The system will not respond to any operation within 30 seconds.
- 5) Password anti-snooping function: enter the password as follows when opening the door :XXX password XXX; You can add some irrelevant codes before and after the password and press "🔒" to confirm. The password must be included in the input.
- 6) When the voltage is lower than 4.8V, it will automatically alarm every time you open the lock, and be sure to replace the new battery as soon as possible.
- 7) Hold down the "SET" key on the rear panel for 6 seconds (turn on the indicator 654321 at the same time) to restore the system to factory defaults. The initial management password is 123456.
- 8) After unlocking, enter "5" + "🔒" successively, and the lock will enter the normal opening mode (this setting is valid for this time. Enter the unlocking information again and then close the lock.
- 9) After unlocking, press "\*" to play the current unlocking information number.
- 10) After opening the electronic locking function, only the administrator can open the lock; Privacy features.

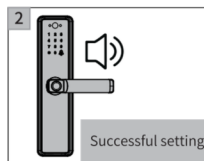
## Smart lock operation

### 1. Initialization Settings

Please note: Before you can start using this lock, you must register a new administrator. If not, you cannot configure a Wi-Fi-enabled lock. The procedure is as follows:

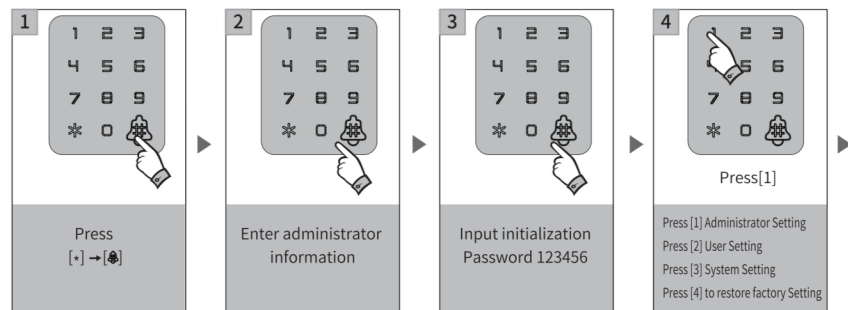


Hold down the reset button for 5 seconds

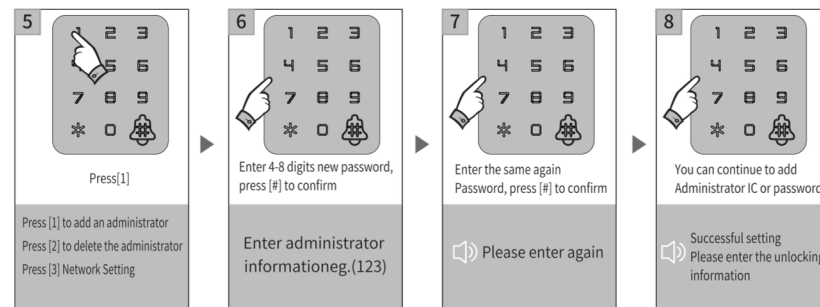


Successful setting

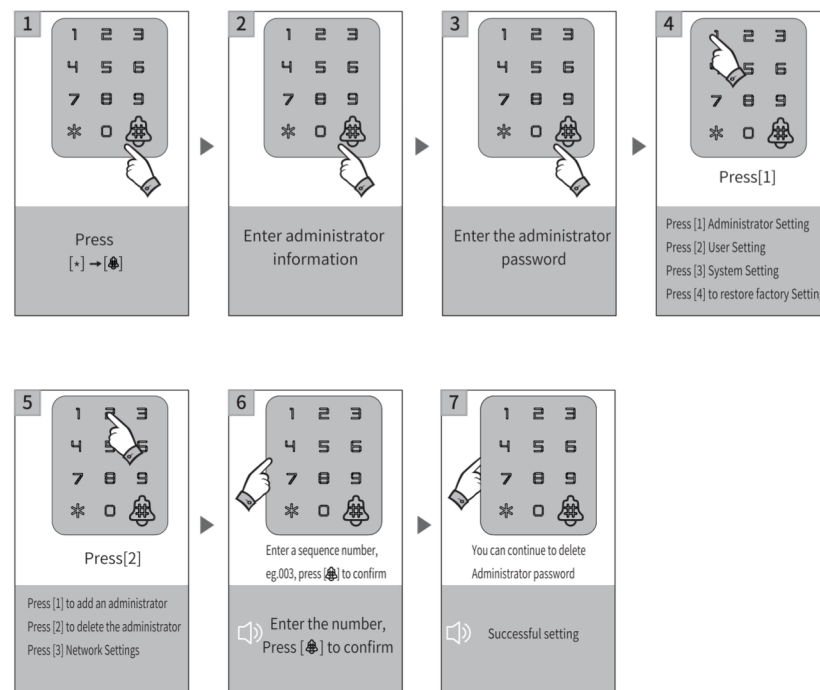
### 2. Add the administrator password



## Smart lock operation

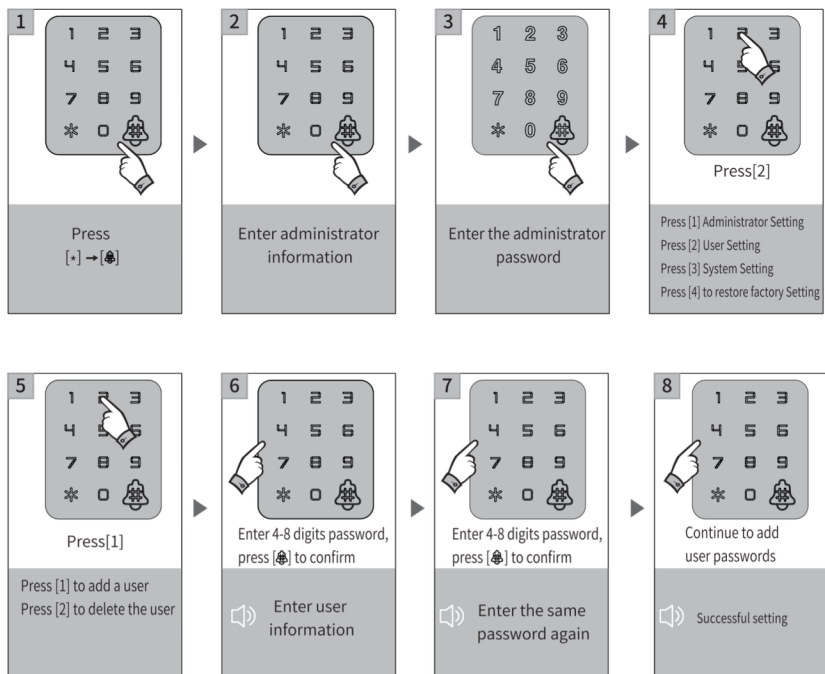


### 3. Delete the administrator password

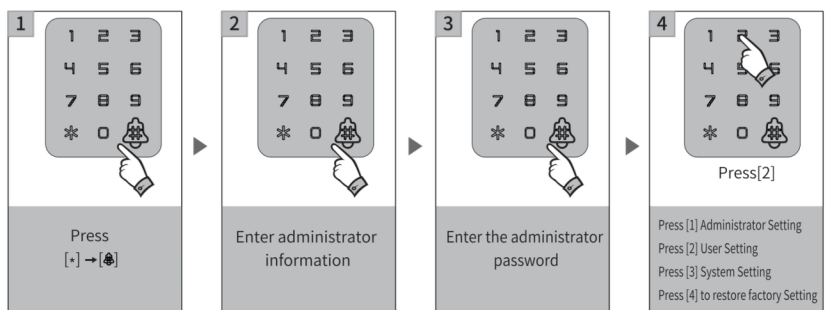


## Smart lock operation

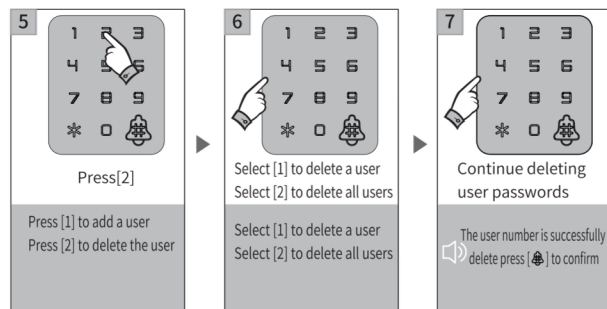
### 4. Add user password



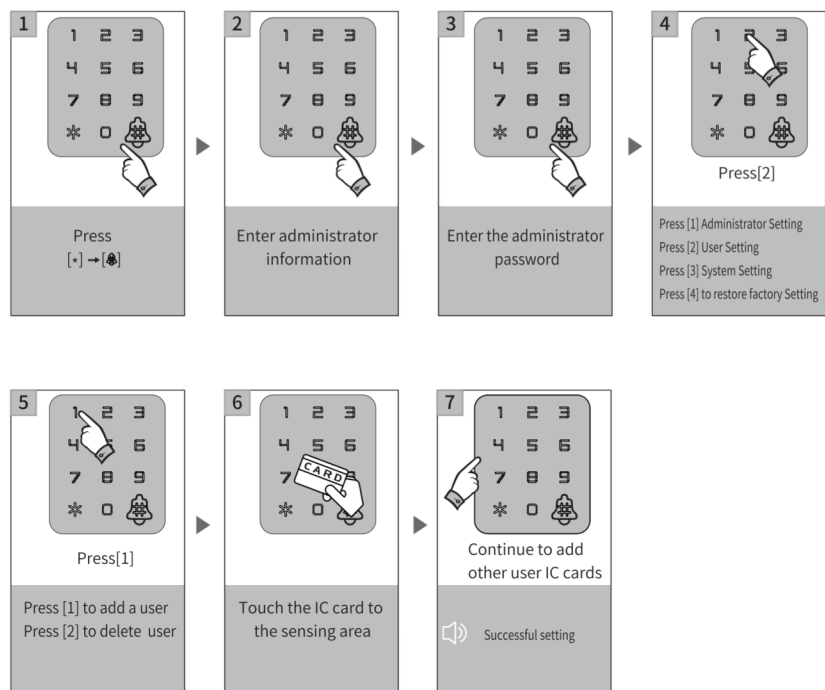
### 5. Delete the user password



## Smart lock operation

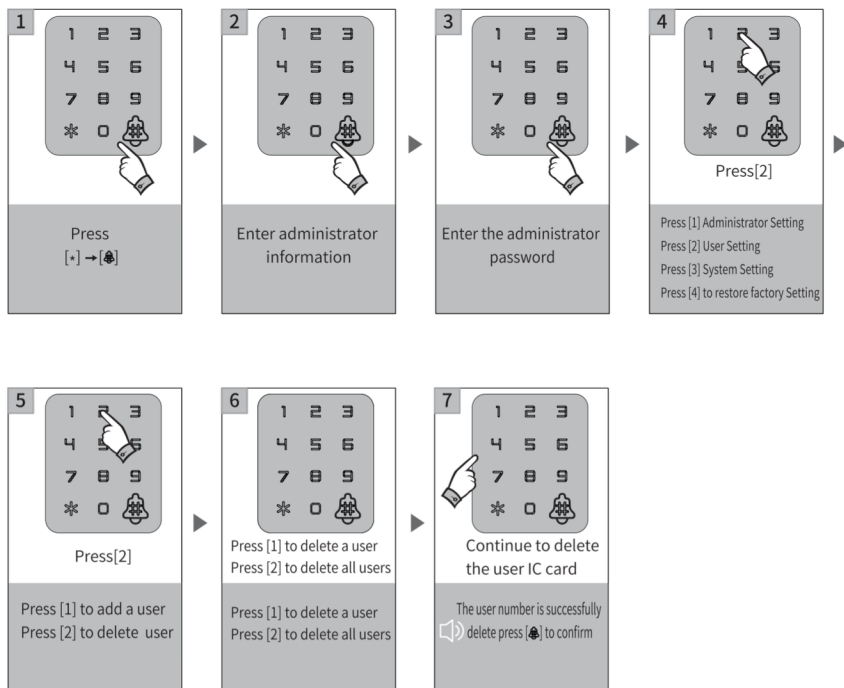


### 6. Add user IC card

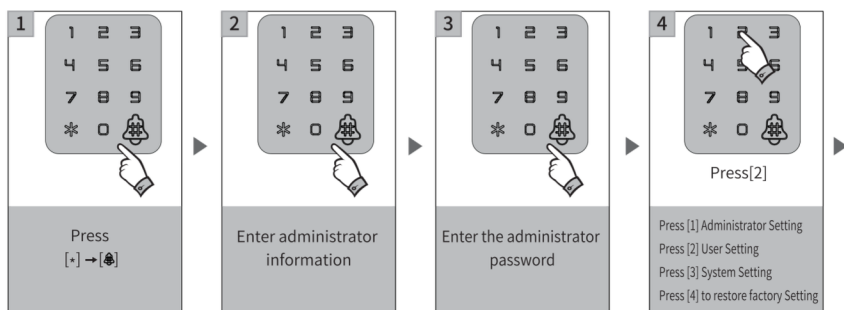


## Smart lock operation

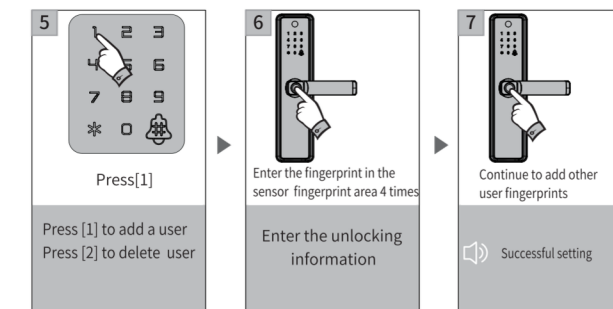
### 7. Delete the IC card information



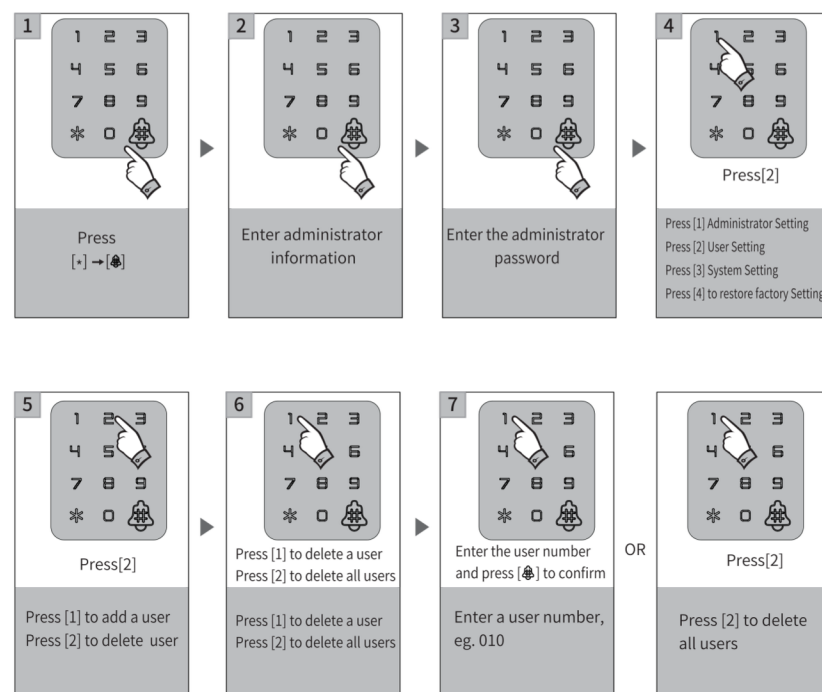
### 8. Add user fingerprint information



## Smart lock operation

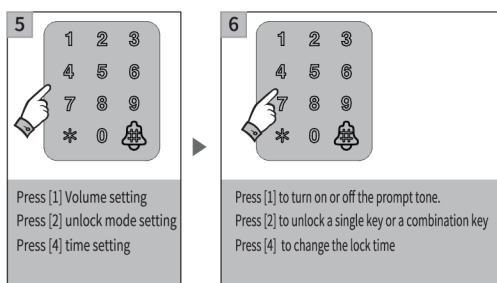
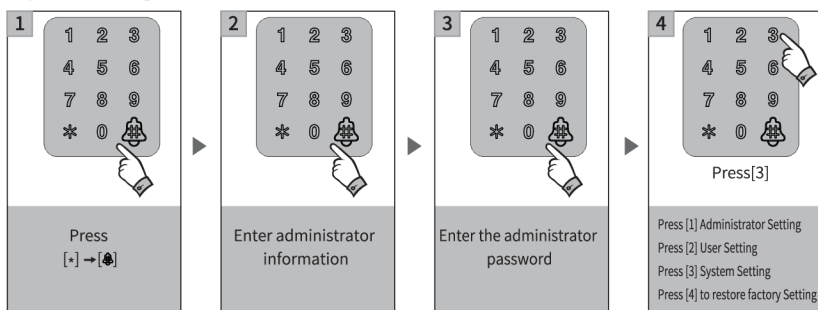


### 9. Delete the user fingerprint



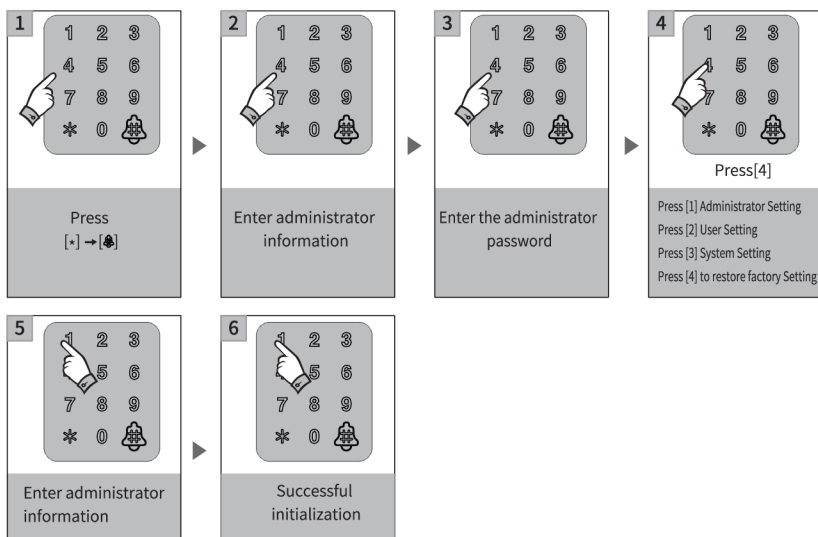
## Smart lock operation

### 10. System setting



Note: You can follow the sound prompt to unlock type/language/lock time and other Settings, these features are designed for some special cases

### 11. Restore factory Settings



## Network operation

### 1. APP configuration (optional Tuya Smart WIFI, currently only 2.4G WIFI band is supported)

- 1) Add an administrator (if added, skip it);
- 2) Search "Tuya Smart" in the App store or APP store to download the app and install it.
- 3) Register and log in with your mobile number.
- 4) Press the "TuYA Smart" interface to find the security sensor, record "Door lock Wi-Fi", and click to complete the device addition and use as prompted.
- 5) Add a network:
  - a Press \* + [🔔] to verify the administrator, press 1 to enter the administrator settings, and press 3 to configure the network for voice broadcast networking settings
  - b. Voice announcement: Press "1" for WIFIconnection (indicator at the top of the screen is slow) Press "2" for intelligent connection (indicator at the top of the screen is fast blinking):
  - c. When the addition is successful, the 1234 keyboard light on the keyboard will be turned on successively and the voice will announce: "Operation succeeded"; Voice broadcast "Add failed" after timeout;
- 6) Remote unlocking: wake up the screen and press "🔔" after the voice prompt: remote unlocking request:
- 7) The lock time will be corrected when unlocking remotely.



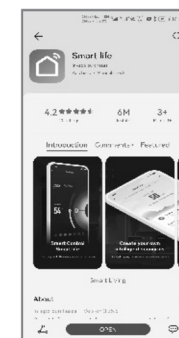
### 2. Other instructions

- 1) If you enter the wrong password for more than 5 times, the keyboard will be locked for 30 seconds, and the system will not respond to any operation within 30 seconds.
- 2) Password anti-prying function: enter the password as follows when opening the door :XXX password XXX; You can add some irrelevant codes before and after the password, and then press "🔔" to confirm. The password must be included in the input.
- 3) If no operation is performed for more than 10 seconds each time, the system will automatically exit.
- 4) When the voltage is lower than 4.8V, it will automatically alarm every time you open the lock. Be sure to replace the new battery as soon as possible.
- 5) Long press the "SET" key on the inside panel for 6 seconds (turn on the indicator light of 65321 at the same time) to restore the system to factory status. The initial management password is 123456.
- 6) In the factory condition, enter 333666999 "🔔" to quickly switch between Chinese and English.
- 7) After unlocking the lock, enter "5" + "🔔" successively to enter the normal opening mode (this setting is effective for this time), and enter the unlocking information again before locking;
- 8) After unlocking, press "\*" to play the current unlocking information number.

# Tuya APP operation instructions

## 1.Download Tuya APP

The IOS version can be downloaded from appstore, and the Android version can be downloaded from google play, App Store, Baidu Ali, 360Huawei, Xiaomi and other app markets



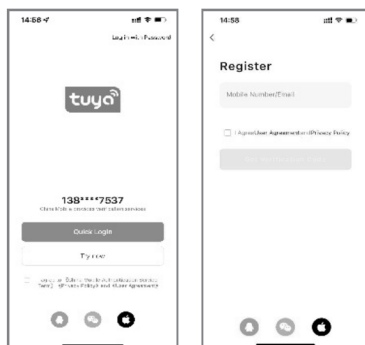
## 2.Open the Tuya APP in the mobile phone



Smart life

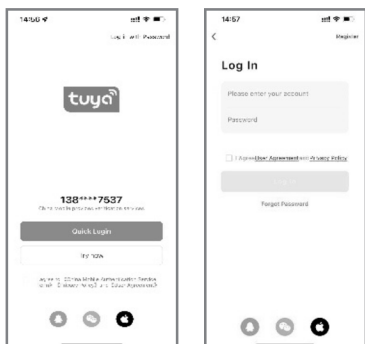
## 3. Registering an account

Enter the Tuya APP and click "Register" in the upper right corner to enter the interface of account and registration. You can register an account by mobile phone or email. You can choose either way



## 4. Login account

After login>>enter the account >>Enter the login password of the account.

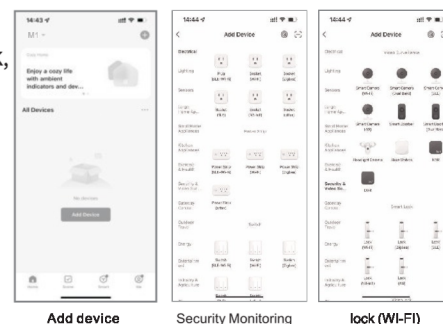


## 5. Adding devices

Step 1: Wake up operation smart lock, press "1" + " " (bell icon)

>> Start Network >> Network Configuration (LAN Heng);

Step 2: Add devices -- security monitoring -- "Door lock WI-FI"



## 6. Connect WIFI

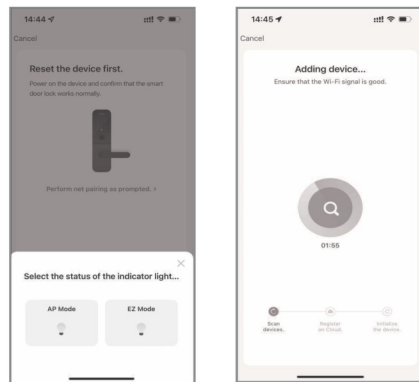
Connect to WIFI, enter the password of connected WIFI and click Next.



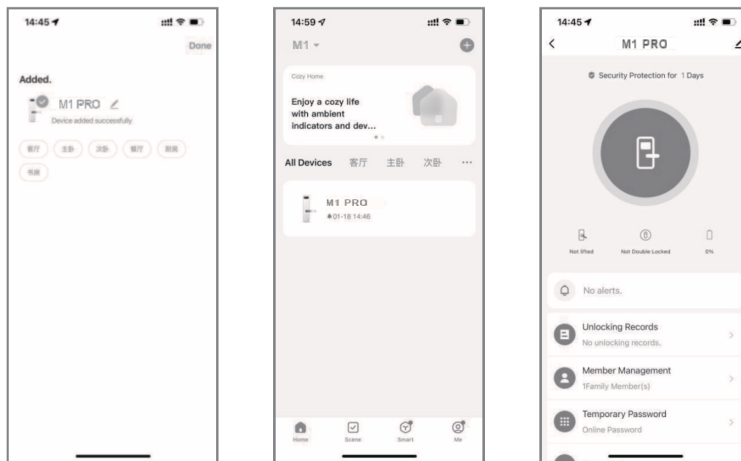
## 7. Perform the following steps: Go to the next step



## 8. Select Wi-Fi Fast connection Wait for the connection

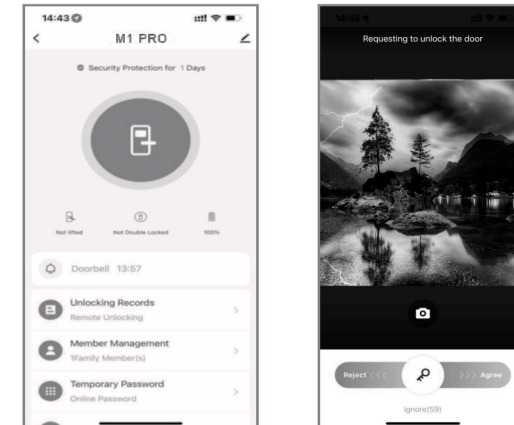


## 9. The distribution network is successful, enter the home doorlock PRO



## 10. Press the doorbell to unlock remotely

Remote unlocking is triggered by locking the doorbell, the guest requests, owner unlocks, as shown below: smart door lock—remote request—unlock



## 11. user list

Click the door opening record to view the remote information, the alarm message interface displays the image of the customer who pressed the doorbell remotely, and the operation log interface displays the unlocking information, as shown below:

